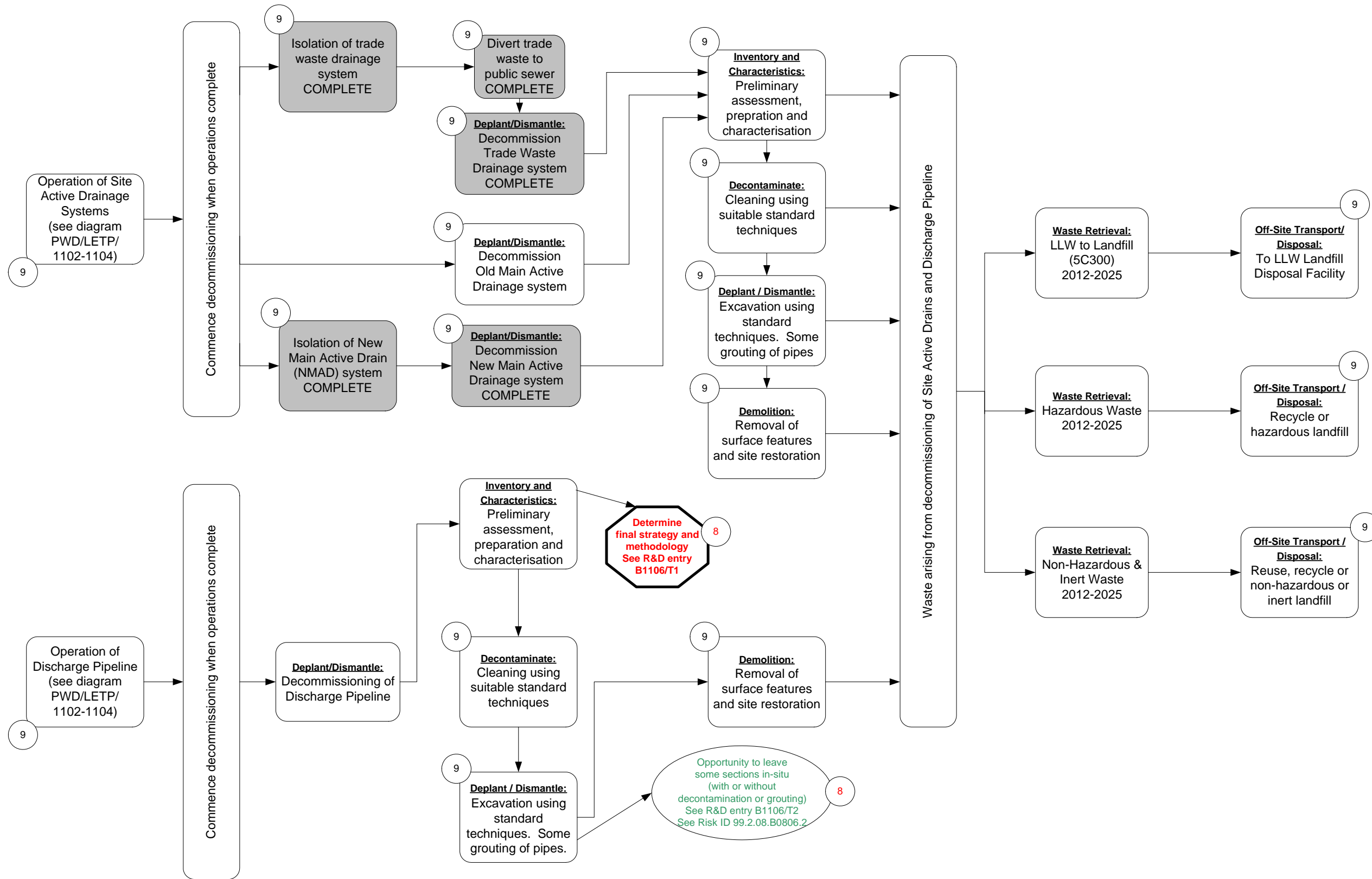
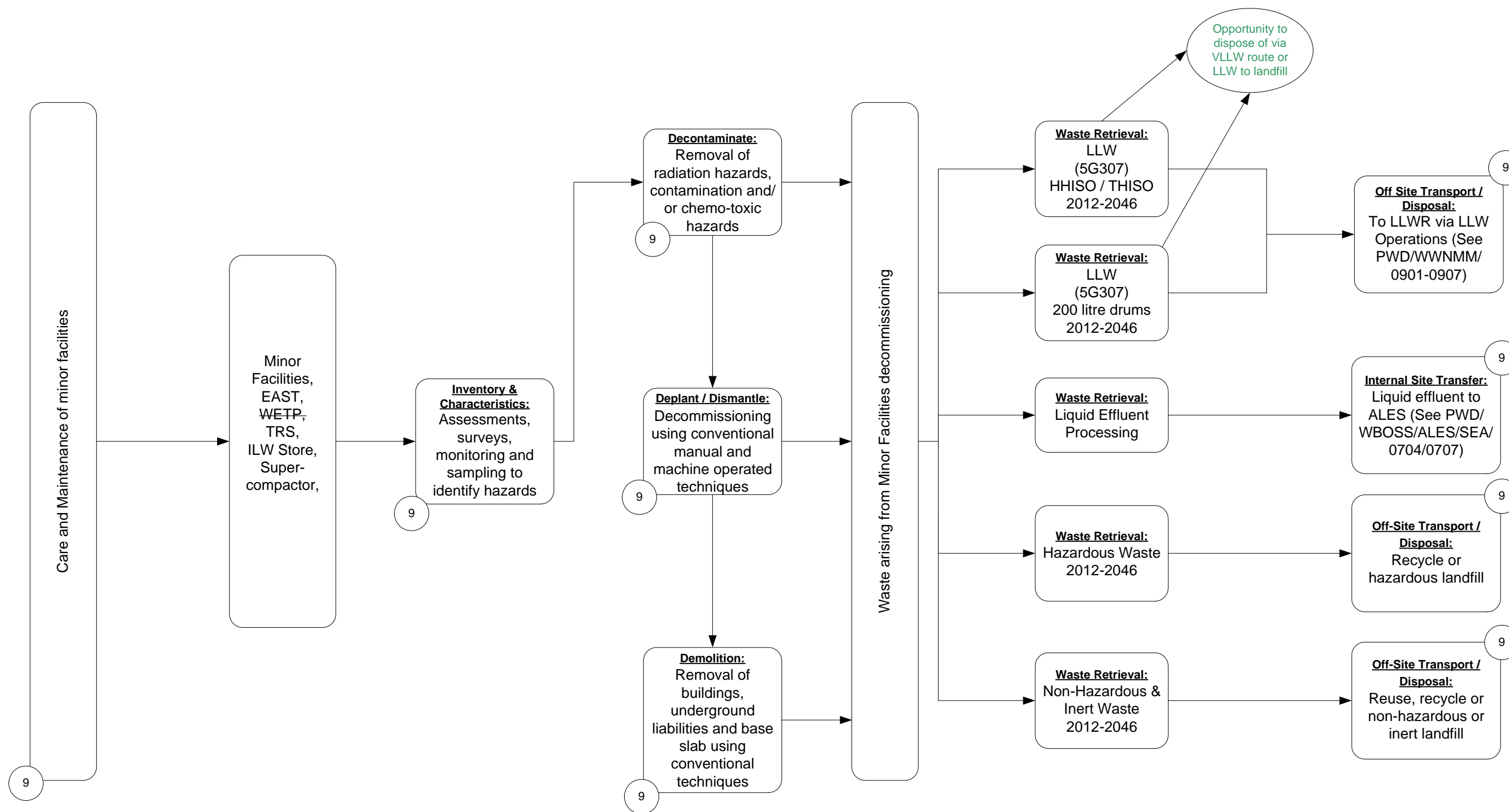


HARWELL BALANCE OF SITE STRUCTURES - Site Active Drains and Discharge Pipeline - PWD/HBOSS/SAD/PIPE/0805-0806 (Detailed Volume 99.2.08)

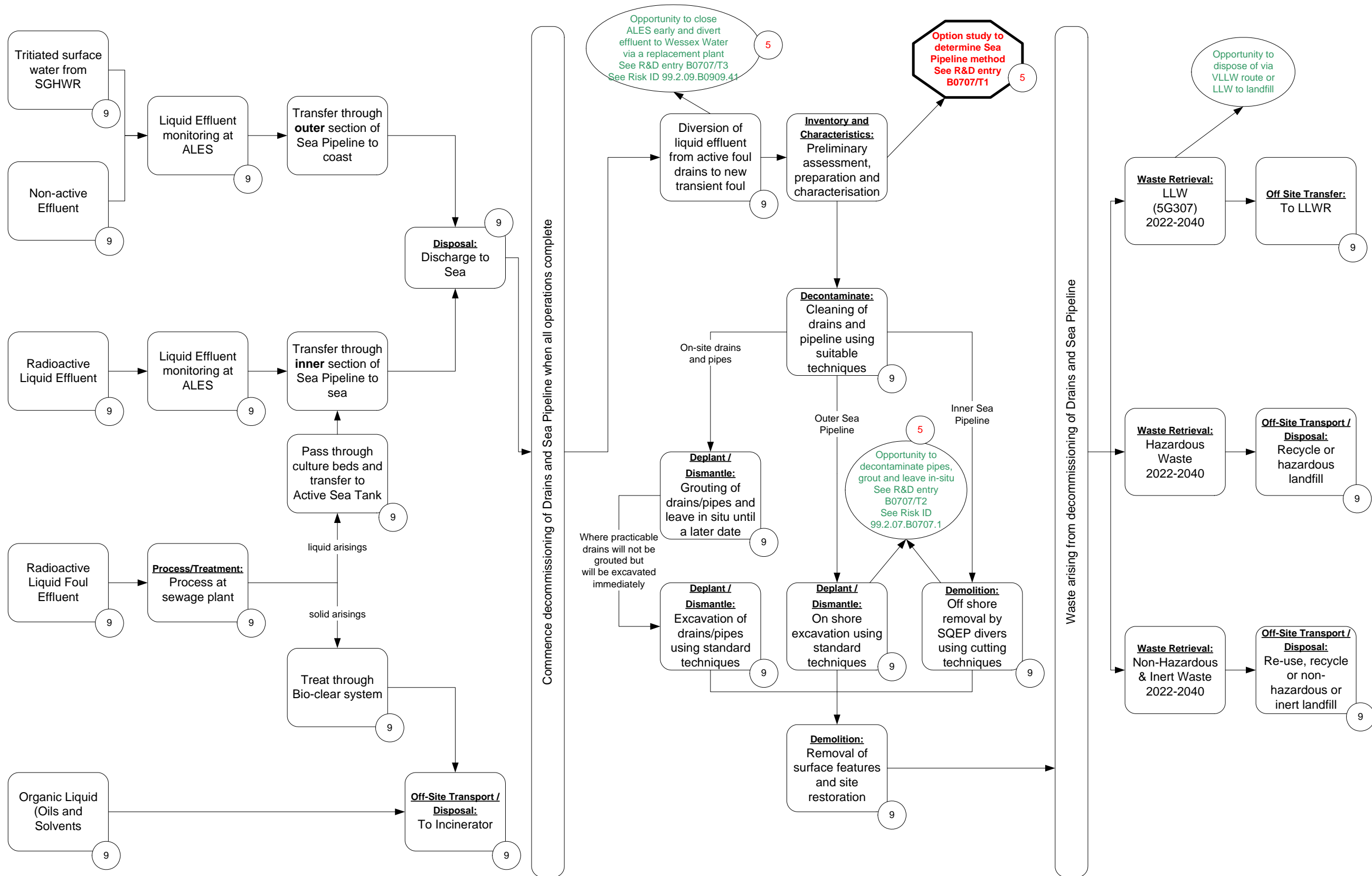
rev. Dec 2011





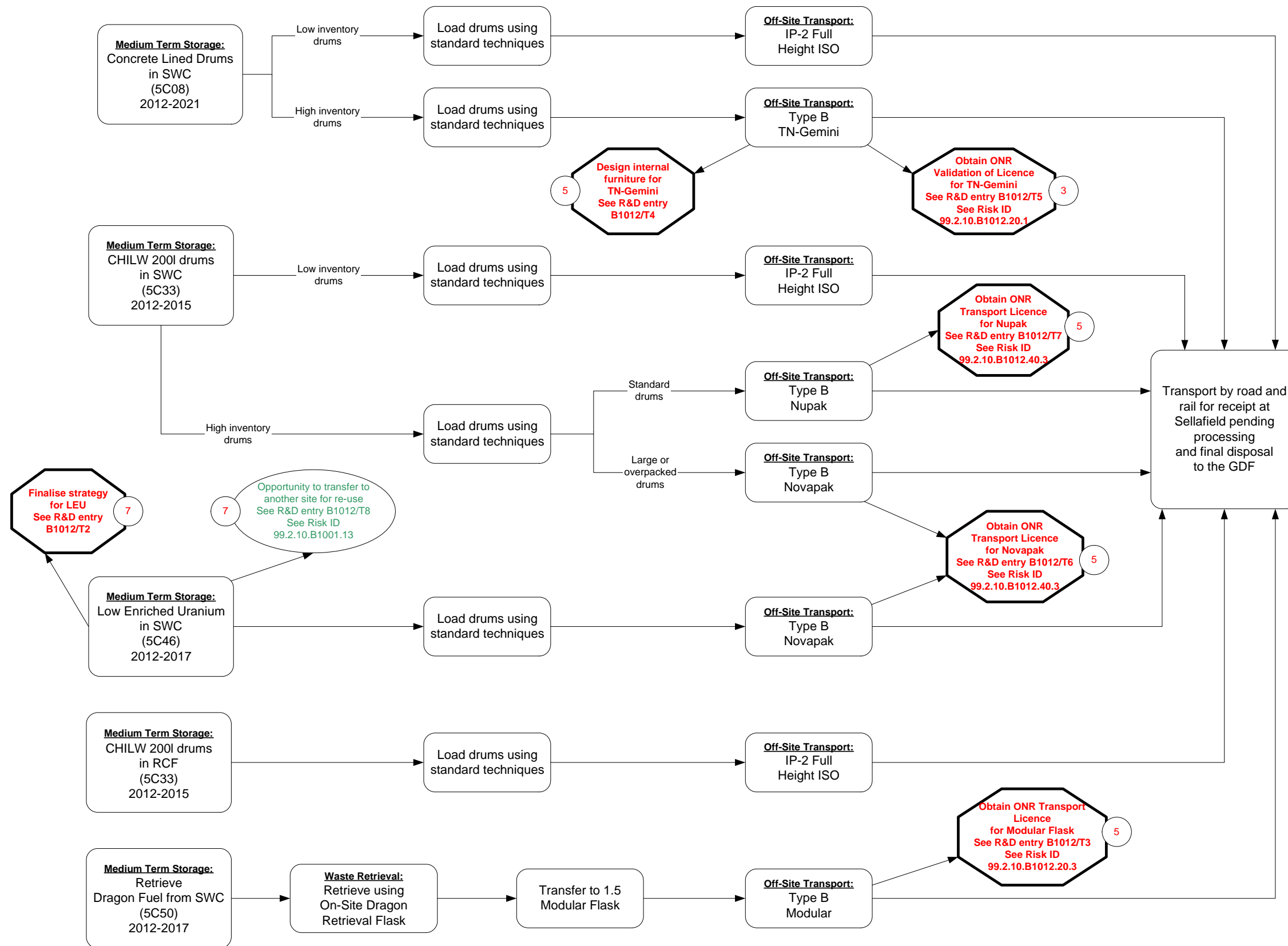
WINFRITH BALANCE OF SITE STRUCTURES - Drains and Sea Pipeline - PWD/WBOSS/ALES/SEA/0704/0707 (Detailed Volume 99.2.07)

rev. Dec 2011



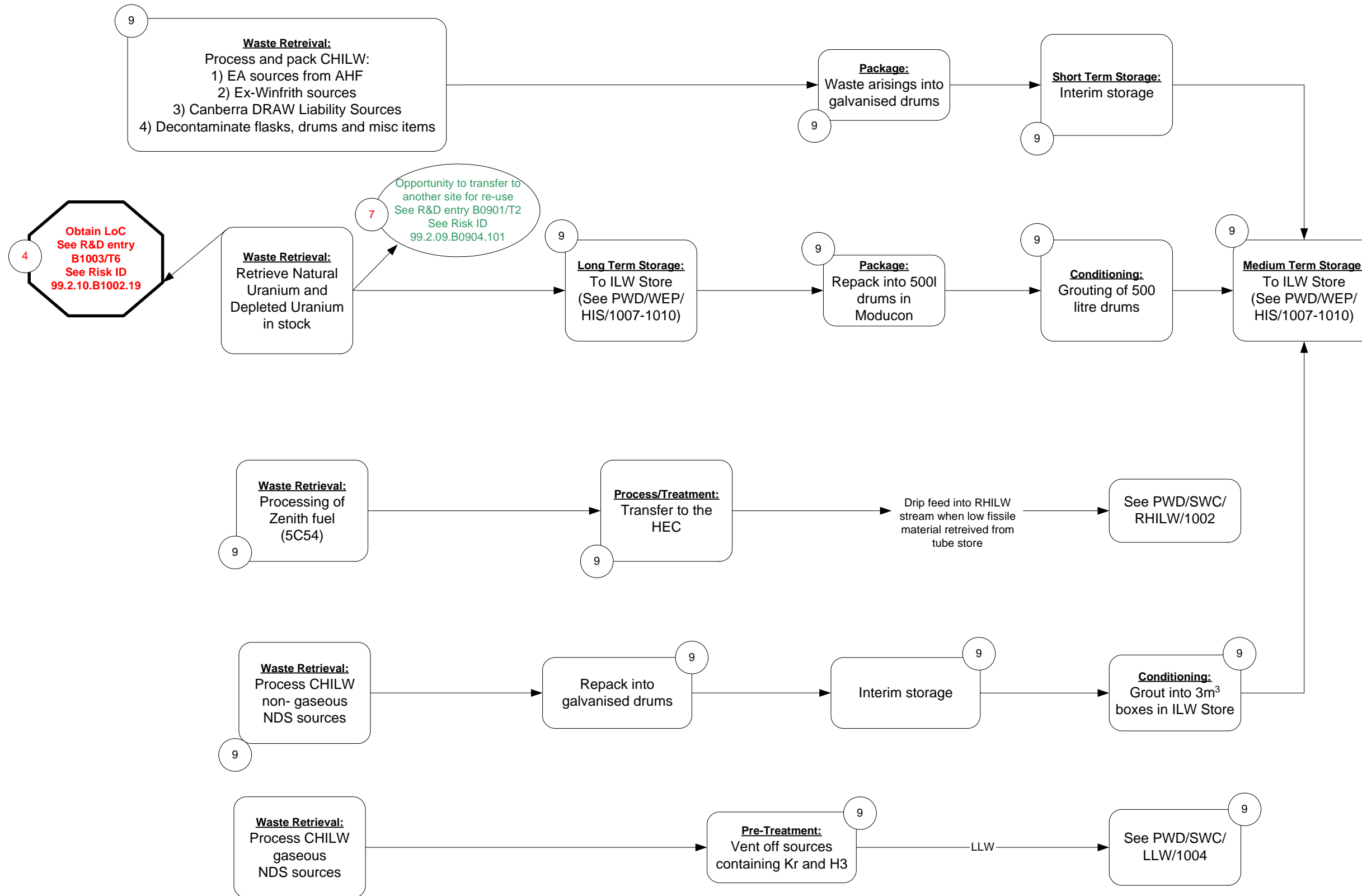
HARWELL WASTE & NUCLEAR MATERIALS MANAGEMENT - SPECIAL NUCLEAR MATERIALS TRANSFERS - PWD/SWC/SNMT/1012 (Detailed Volume 99.2.10)

rev. Dec 2011



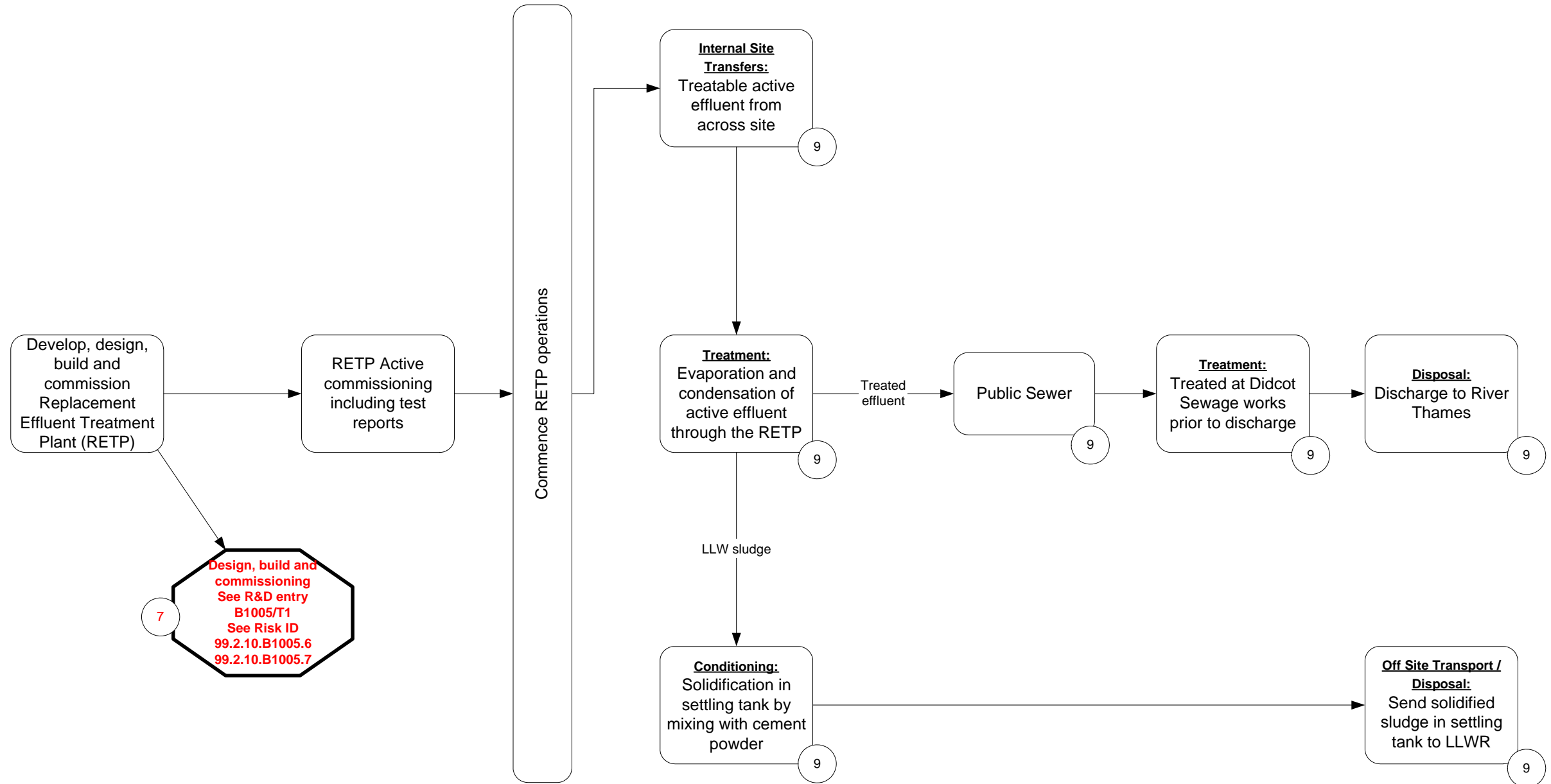
HARWELL WASTE & NUCLEAR MATERIALS MANAGEMENT - CHILW OPERATIONS - PWD/SWC/CHILW/1003 (Detailed Volume 99.2.10)

rev. Dec 2011



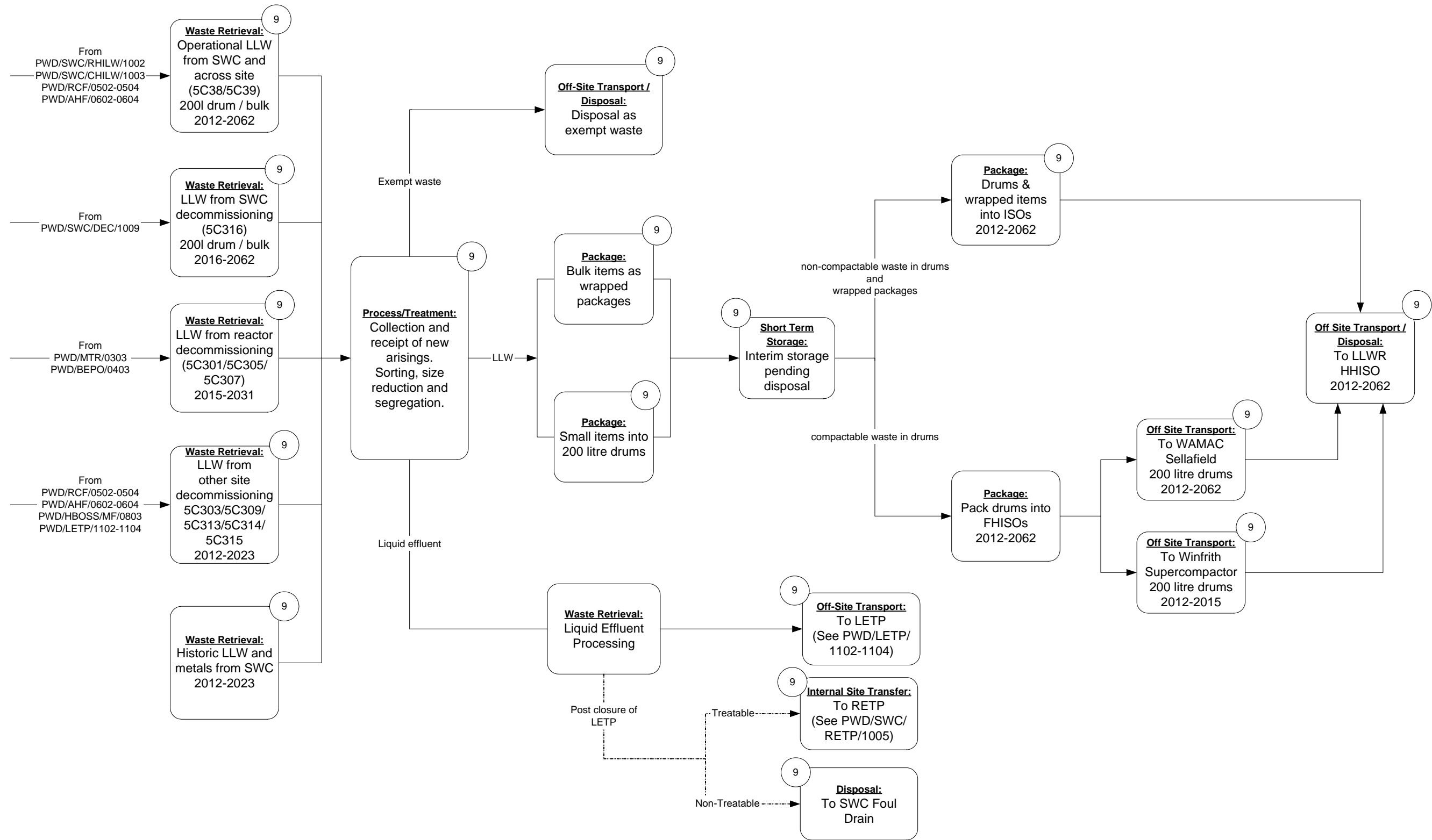
HARWELL WASTE & NUCLEAR MATERIALS MANAGEMENT - REPLACEMENT EFFLUENT TREATMENT PLANT - PWD/SWC/RETP/1005 (Detailed Volume 99.2.10)

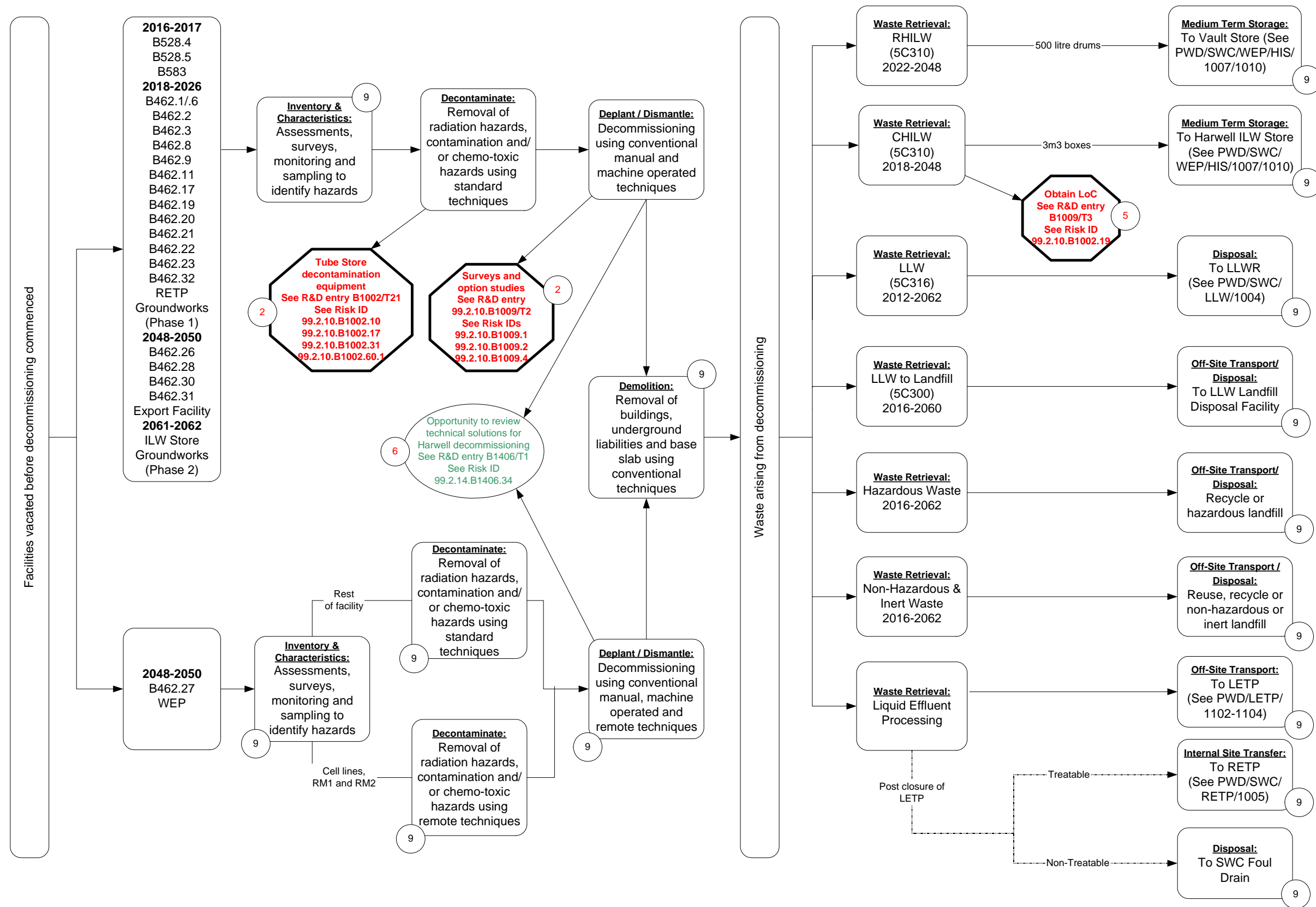
rev. Dec 2011



HARWELL WASTE & NUCLEAR MATERIALS MANAGEMENT - LLW OPERATIONS - PWD/SWC/LLW/1004 (Detailed Volume 99.2.10)

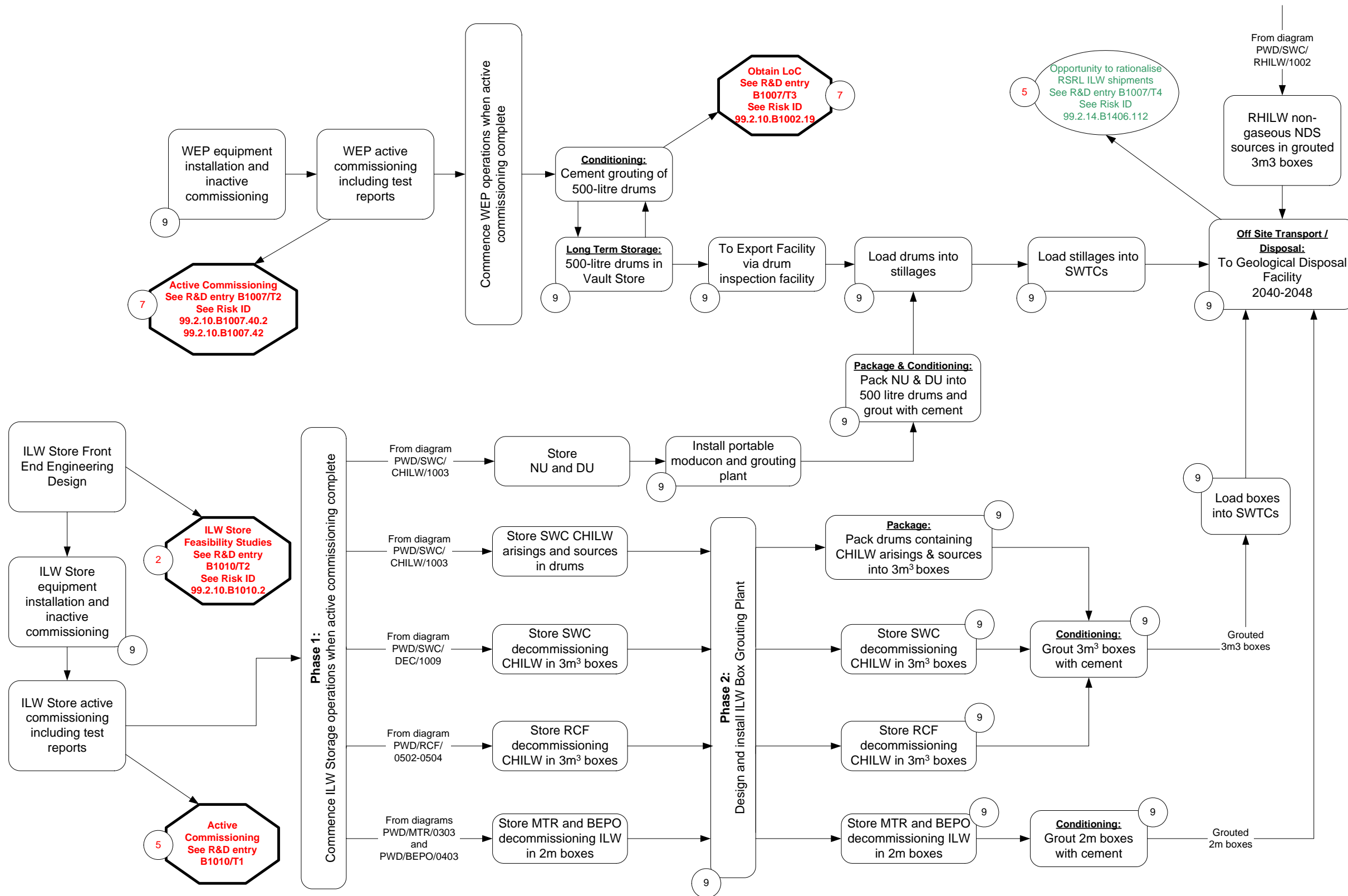
rev. Dec 2011

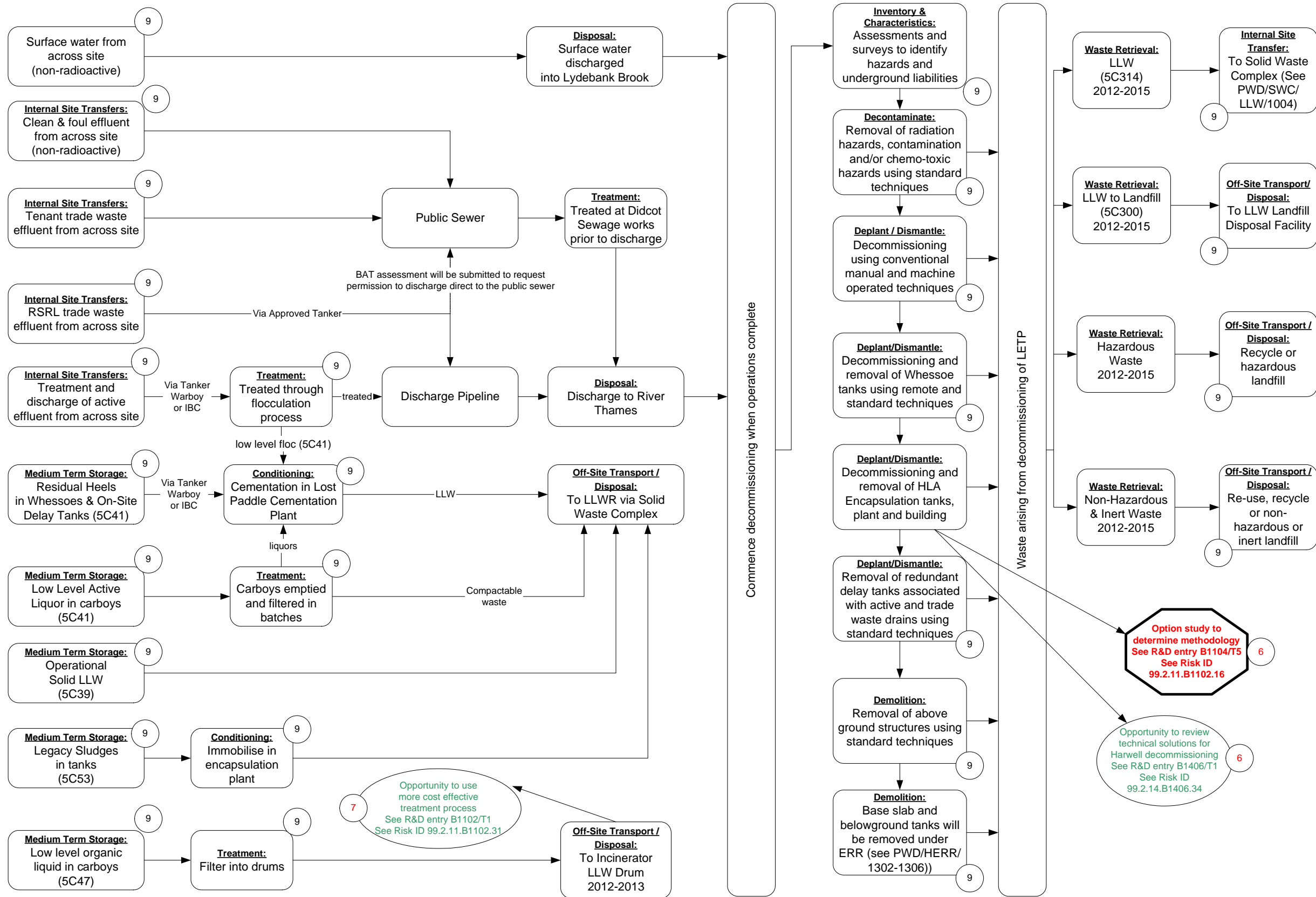




HARWELL WASTE & NUCLEAR MATERIALS MANAGEMENT - WASTE ENCAPSULATION PLANT & ILW STORE - PWD/WEP/HIS/1007/1010 (Detailed Volume 99.2.10)

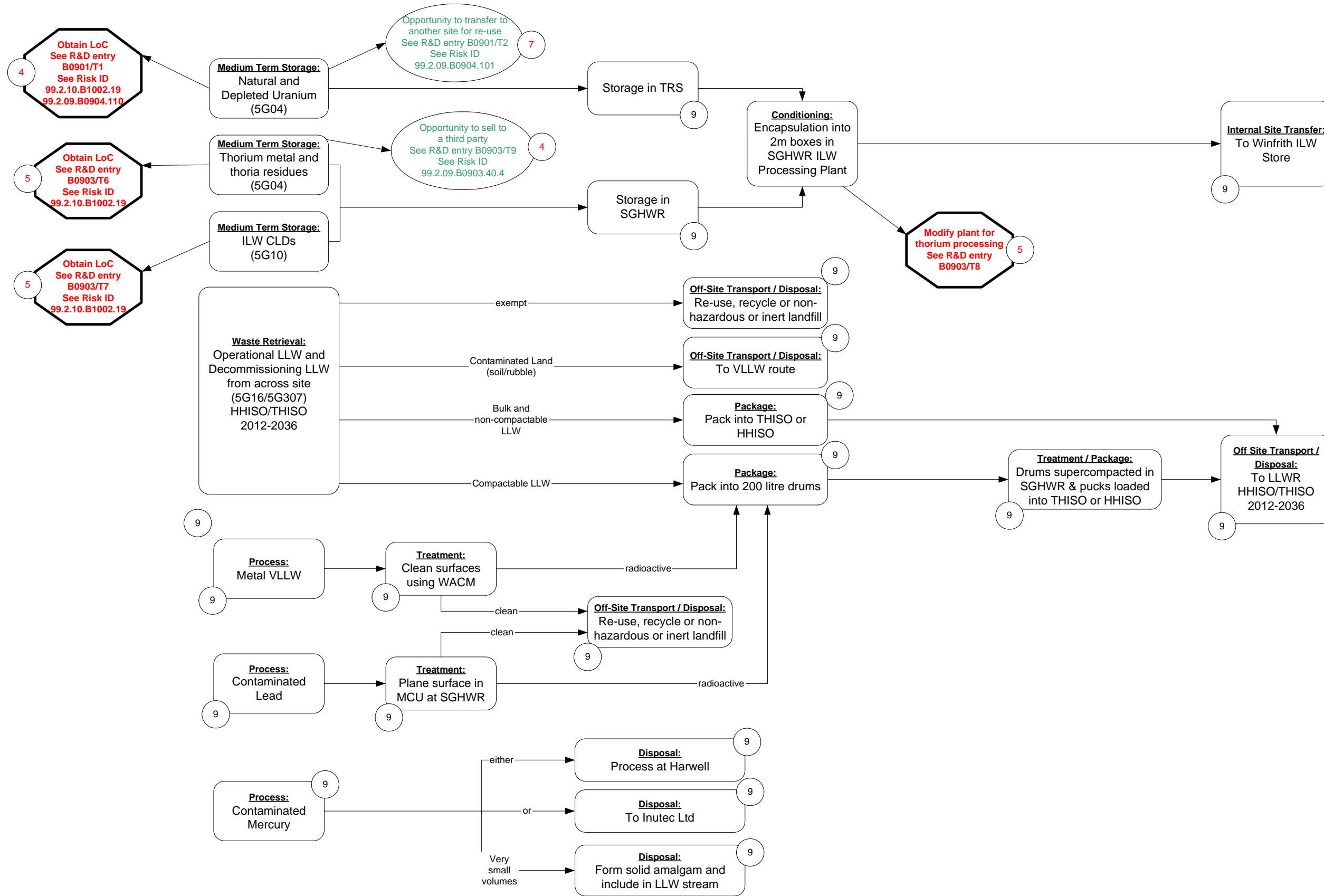
rev. Dec 2011

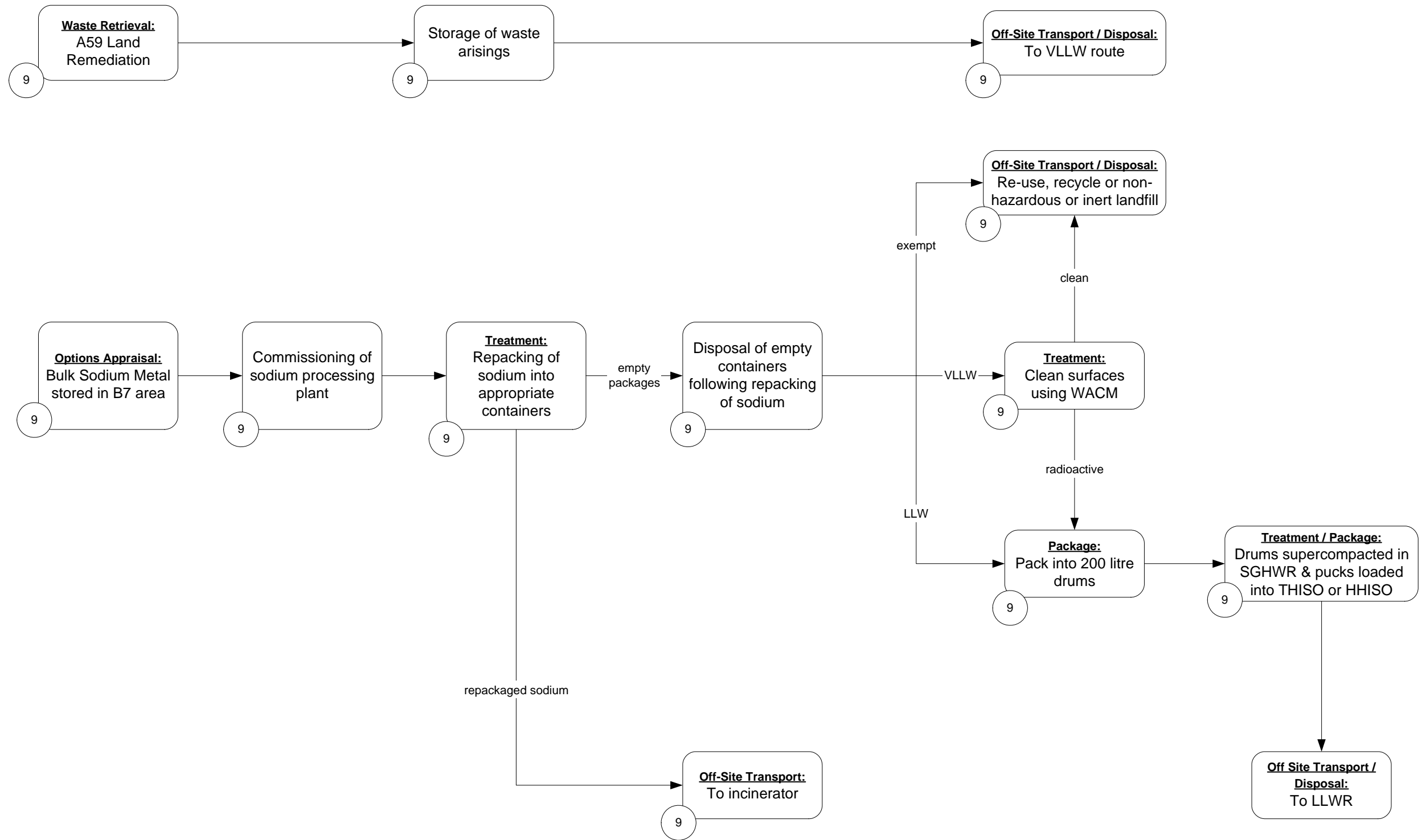




WINFRITH WASTE & NUCLEAR MATERIALS MANAGEMENT (Part 1 of 2) - PWD/WWNMM/0901-0907 (Detailed Volume 99.2.09)

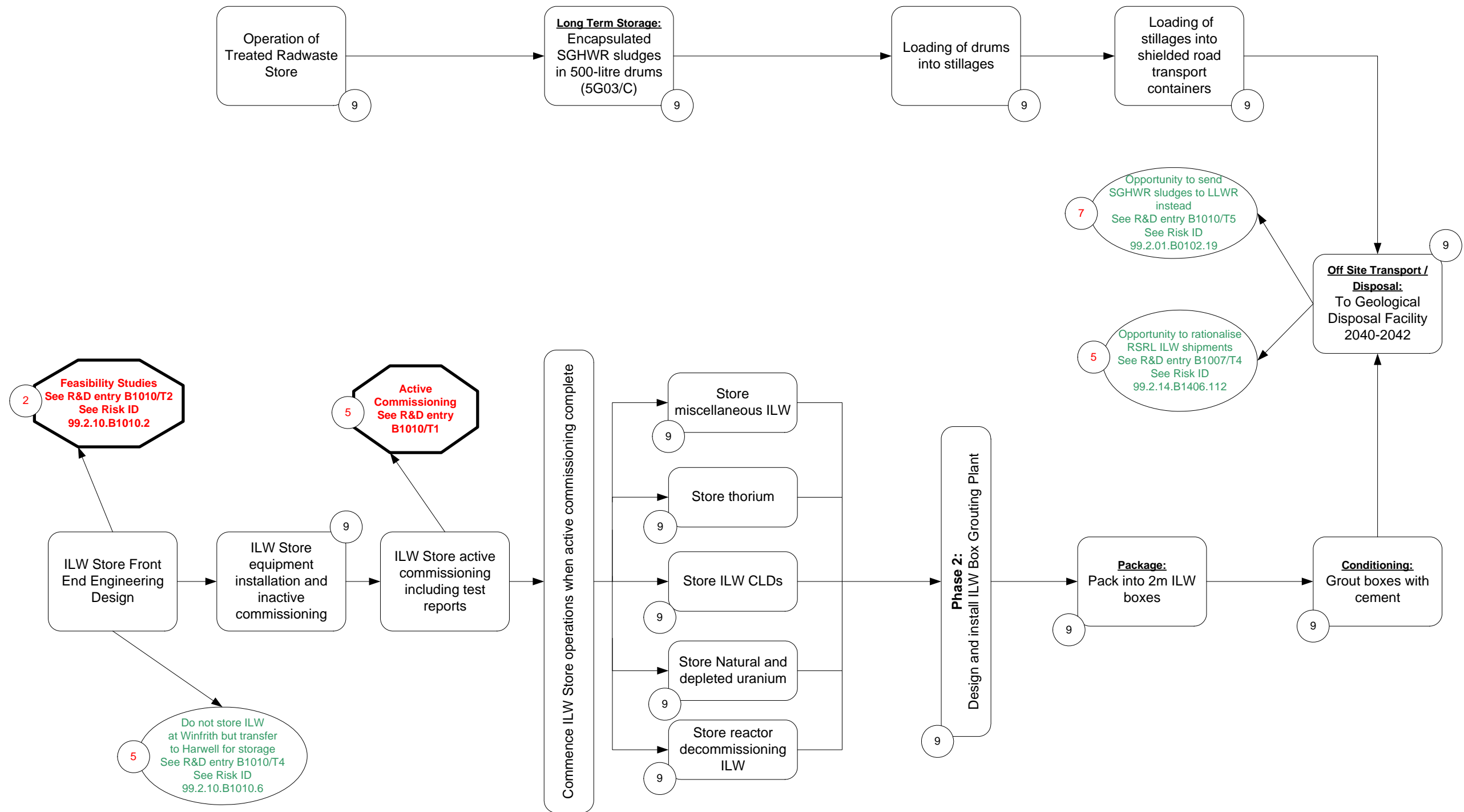
rev. Dec 2011

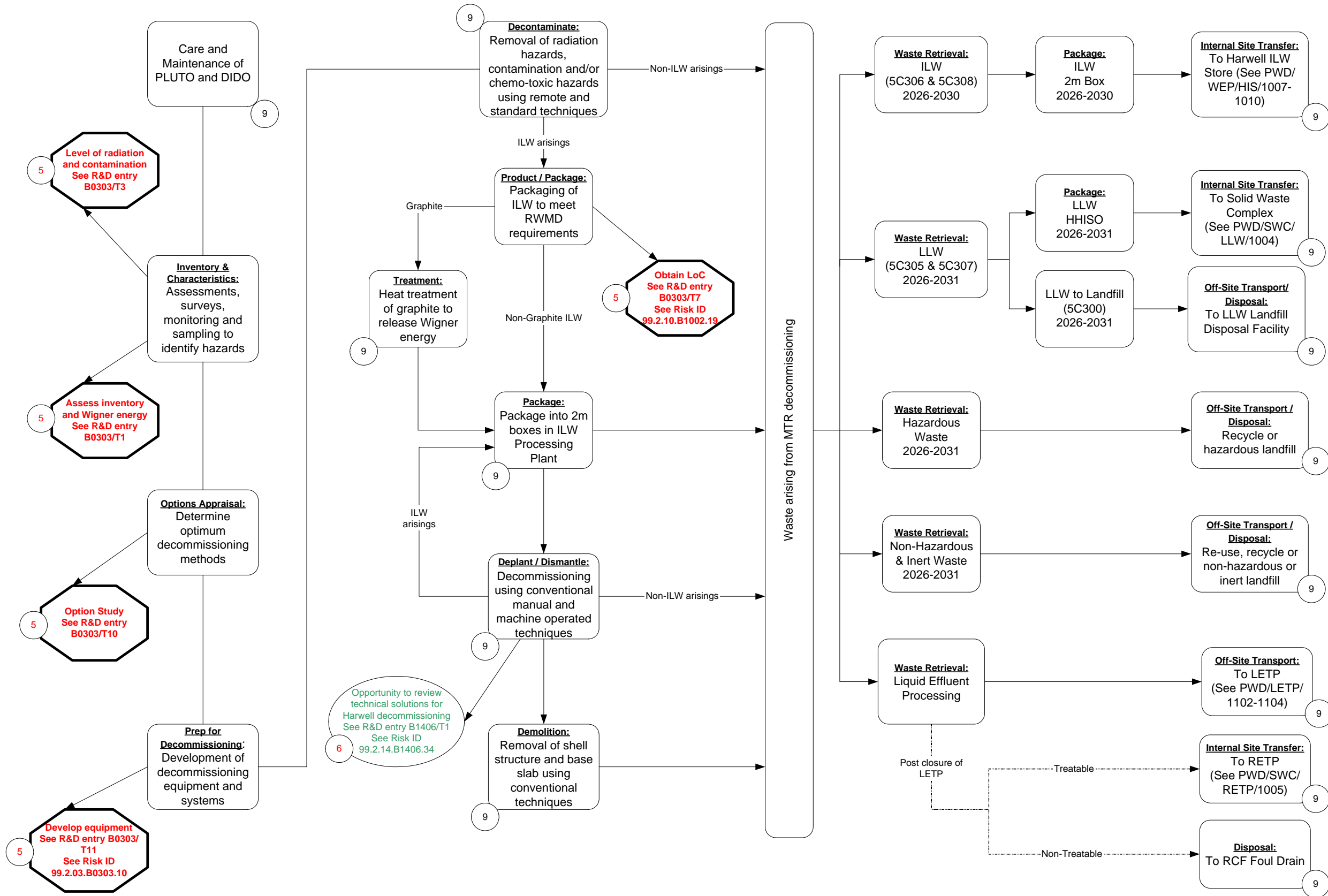




WINFRITH WASTE & NUCLEAR MATERIALS MANAGEMENT - TREATED RADWASTE STORE & ILW STORE - PWD/WWNMM/TRS/WIS/0907-0908 (Detailed Volume 99.2.09)

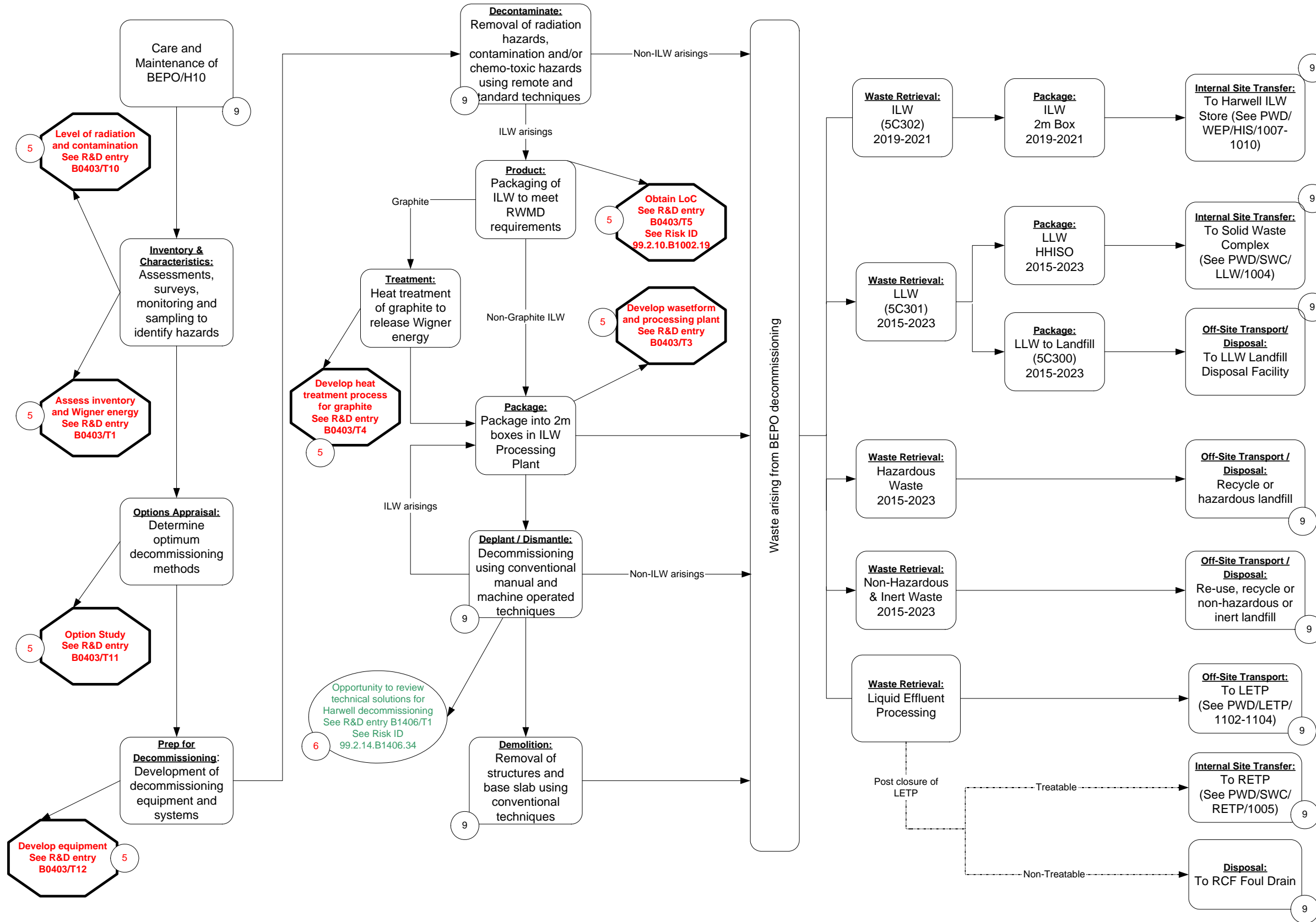
rev. Dec 2011

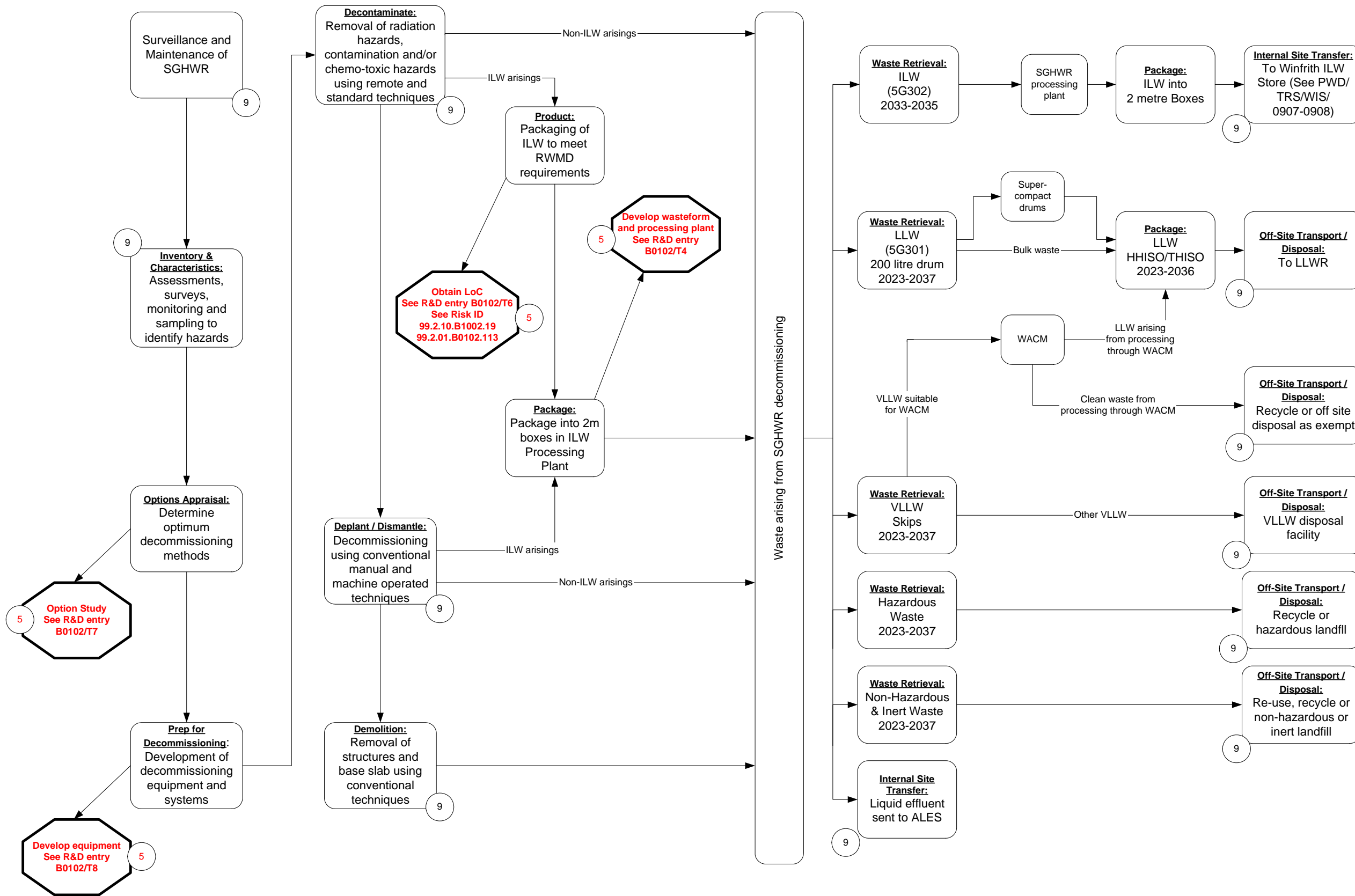




HARWELL BEPO/H10 - PWD/BEPO/0403 (Detailed Volume 99.2.04)

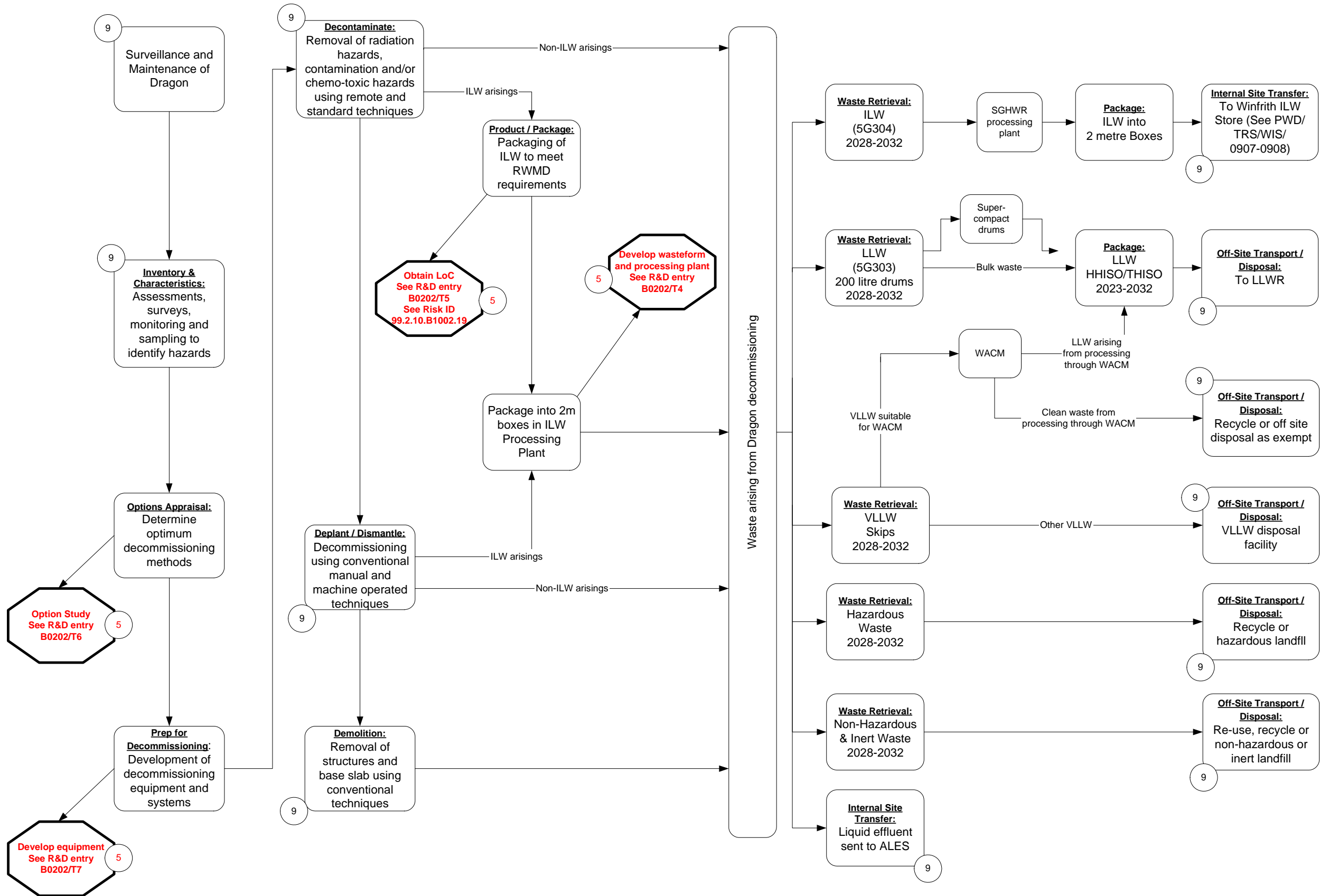
rev. Dec 2011

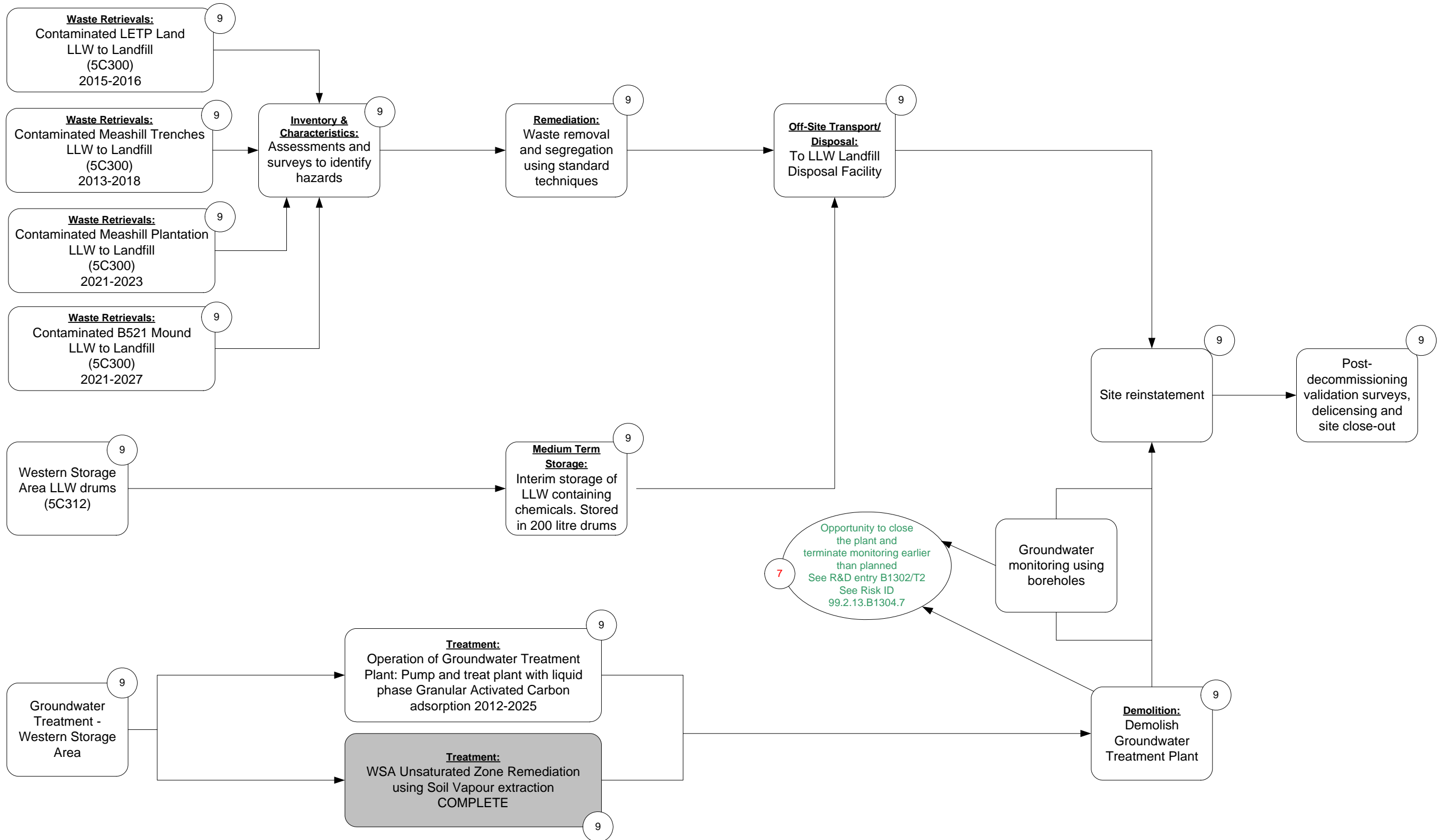


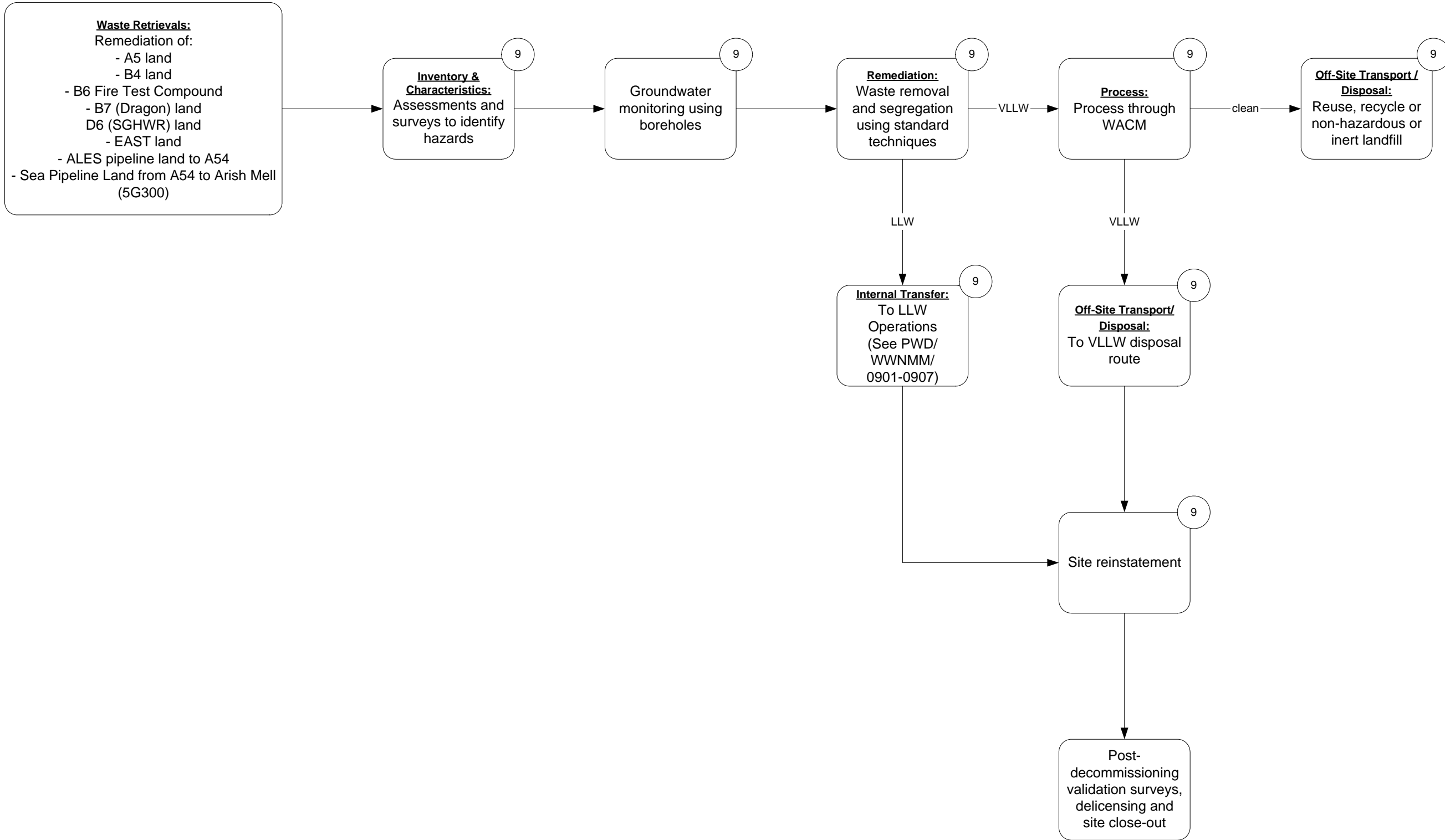


WINFRITH DRAGON REACTOR - PWD/Dragon/0202 (Detailed Volume 99.2.02)

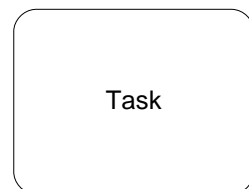
rev. Dec 2011



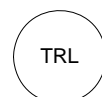




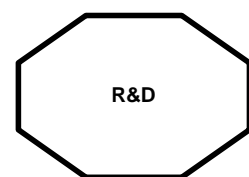
KEY TO SHAPES USED:



Task



TRL



R&D



Opportunity

GLOSSARY

rev. Dec 2011

AHF - Active Handling Facility
ALES - Active Liquid Effluent System
BAT - Best Available Techniques
BEPO - British Experimental Pile "0" reactor
BoSS - Balance of Site Structures
CHILW - Contact Handled Intermediate Level Waste
CLDs - Concrete Lined Drums
DRAGON - Winfrith Reactor
EA - Environment Agency
EAST - External Active Sludge Tanks
ERR - Environmental Remediation and Restoration
FHISO - Full Height ISO
GLEEP - Graphite Low Energy Experimental Pile reactor
HEC - Head End Cells
HHISO - Half Height ISO
HLA tanks - Higher Level Active tanks
IP-2 - Industrial Package Type 2
LETP - Liquid Effluent Treatment Plant
LLW - Low Level Waste
LOC - Letter Of Compliance
MTRs - Materials Testing Reactors (PLUTO and DIDO)
Moducon - Modular Containment
NDS - National Disposal Service
ONR - Office for Nuclear Regulation
RCF - Radiochemical Facility
RETP - Replacement Effluent Treatment Plant
RHILW - Remote Handled Intermediate Level Waste
RM1 - Retrieval Machine 1
RM2 - Retrieval Machine 2
RWMD - Radioactive Waste Management Directorate
SGHWR - Steam Generating Heavy Water Reactor
SQEP - Suitably Qualified and Experience Persons
SWC - Solid Waste Complex
SWTC - Standard Waste Transport Container
THISO - Third Height ISO
TRS - Treated Radwaste Store
VLLW - Very Low Level Waste
WACM - Winfrith Abrasive Cleaning Machine
WAMAC - Waste Monitoring and Compaction Plant
WEP - Waste Encapsulation Plant
WETP - Waste Encapsulation Treatment Plant
WRATs - Waste Requiring Additional Treatment
WSA - Western Storage Area